

Arena

Puka mōhiohio
Information booklet

PALMY
VENUES +
EVENTS



Te rārangi upoko

Contents

05	Welcome
06	Location
11	Palmy Map
12	Sporting Events + Tournaments
15	Conferences + Seminars
16	Exhibitions + Trade Shows
19	Gala Dinners + Cocktail Functions
20	Weddings
21	Concerts
25	Venue Map
26	Arena 1
26	Fly Palmy Arena (Arena 2)
29	Fly Palmy Arena Corporate Lounges
30	Arena 3
33	B&M Centre (Arena 4)
34	Arena 5
37	Arena 6
38	Catering
40	Accommodation
42	Things to do in Palmy
44	Taste your way around



Nau Mai Rā

Welcome

Arena is a leading multi-use sports and events facility that takes more than 3,000 bookings a year.

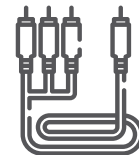
Arena is home to 30 sporting codes and hosts a wide range of trade shows, exhibitions, sporting fixtures, dinners, conferences, meetings, seminars, festivals, concerts and leisure events year-round. The 18-hectare site is just seven minutes' walk from Palmy's city centre.

Arena has six venues, four indoor venues and two outdoor venues.

Why we're the perfect venue



Dedicated event coordinator



Onsite technician



Multiple venues under one roof



CBD location



Operations staff



Onsite catering



Walking distance to accommodation



Free car parking

Te takiwā o Papaioea

Location

Palmerston North (or as we like to call it, Palmy) is the geographical centre of Aotearoa, 140km (87 miles) north of Wellington. It is part of New Zealand's second-largest population hub, with over one million people located within a two hour (200km) radius.

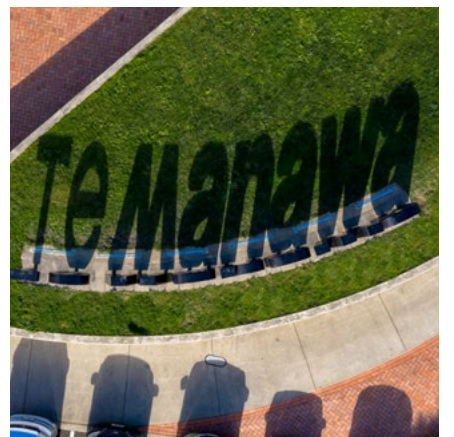
With a population of just under 90,000 people, Palmy is large enough to provide big-city facilities without the traffic congestion, access difficulties and cost associated with the larger centres. On arrival, this bonus is quickly apparent, with a 10-minute trip from the airport to your hotel check-in.










Palmerston North Airport has domestic services to all of the major cities as well as numerous provincial centres. It also had the record for being open the most days of any New Zealand airport. Palmerston North's central location is also well serviced by road and rail.

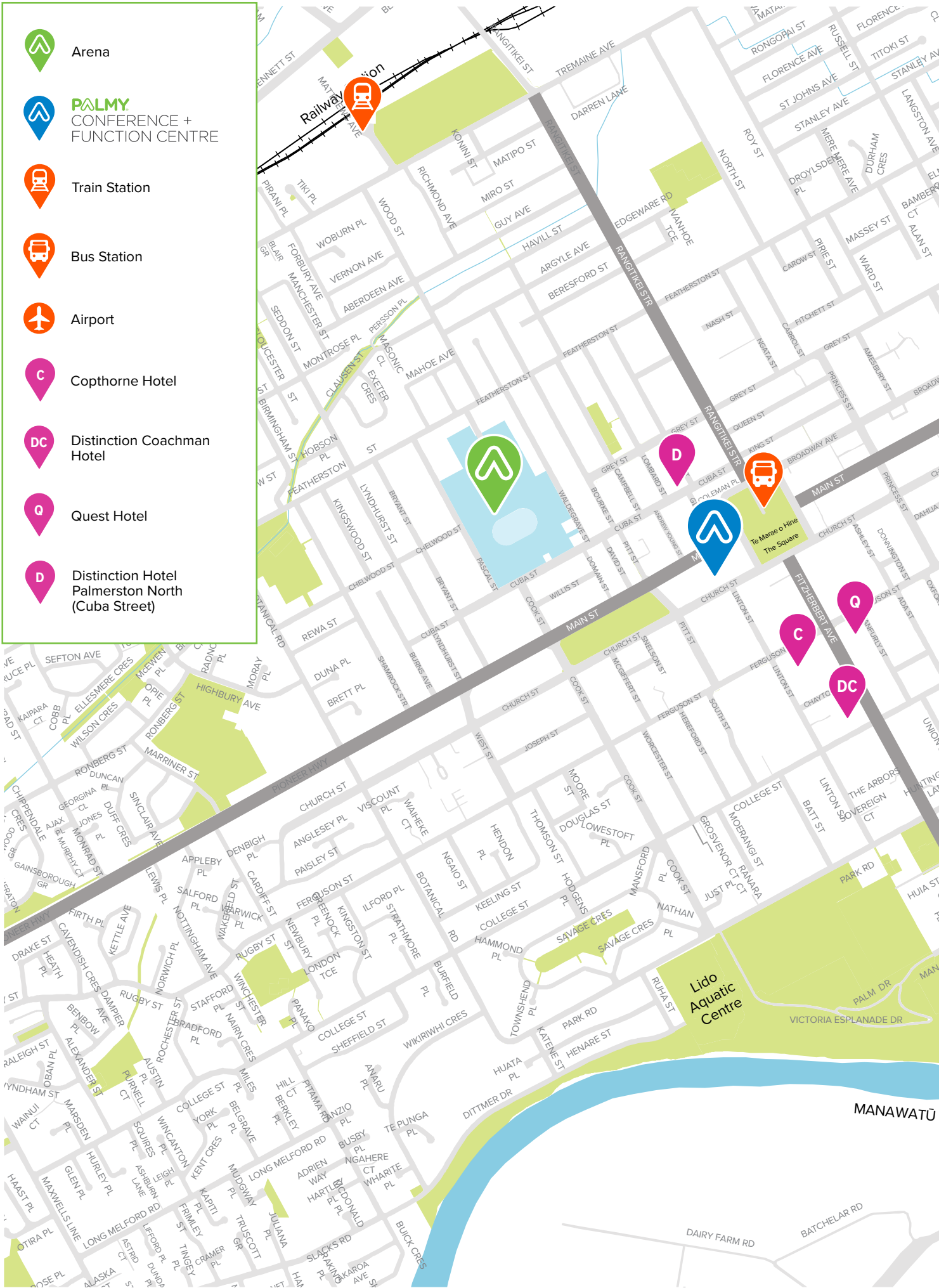
Everything is accessible at Arena. Conveniently located just seven minutes' walk from the city centre, the Arena offers the very best proximity to a range of superb hotels and motels and is surrounded by vibrant bars, cafés, restaurants, museums and retail shops. As an added advantage we offer free car parking for all event attendees.

Palmy is the country's centre of food, science, education, innovation, and we have great rural connections. The Manawatū is also a hub for the New Zealand Defence Force with Linton Military Camp, RNZAF Base Ohakea and we also offer excellent tertiary education with Massey University, UCOL and IPU. KiwiRail is progressing plans for a high-tech freight hub which will help grow Palmy's role as a critical freight distribution centre for the lower North Island. The freight hub highlights our city's nationally strategic location.





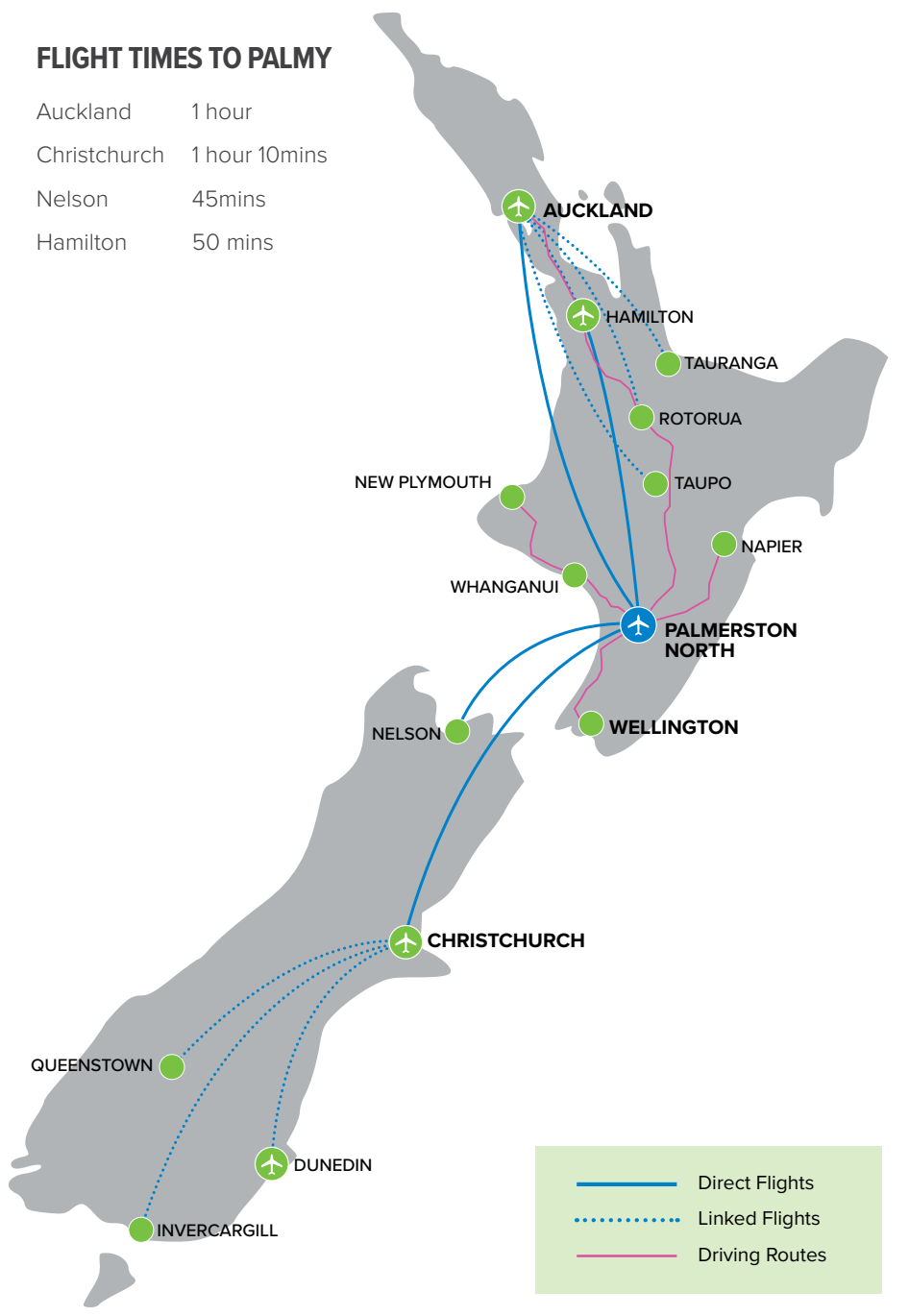
-  Arena
-  PALMY
CONFERENCE +
FUNCTION CENTRE
-  Train Station
-  Bus Station
-  Airport
-  Copthorne Hotel
-  Distinction Coachman
Hotel
-  Quest Hotel
-  Distinction Hotel
Palmerston North
(Cuba Street)





FLIGHT TIMES TO PALMY

Auckland	1 hour
Christchurch	1 hour 10mins
Nelson	45mins
Hamilton	50 mins



- Direct Flights
- ⋯ Linked Flights
- Driving Routes



Ngā taiopenga hākinakina me ngā tātāwhāinga

Sporting events + tournaments

Arena is New Zealand's leading sporting and events precinct and is recognised as being the busiest multi-purpose complex in the country.

The Arena is home to 30 different sporting codes, from rugby to basketball, badminton, netball, football and roller-skating. Our venues are available to be hired for trainings, games, tournaments or community events, with the flexibility of six arenas on offer, which can be utilised individually or in conjunction with one another.

A key attraction for national and regional sporting tournaments is the ability to house all teams under one roof for indoor codes, with the interconnecting Fly Palmy Arena, Arena 3 and B&M Centre. There are also plenty of rooms for tournament offices, referee lounges, physio rooms, change rooms and managers' spaces.

The Arena 6 fields are home to many football, rugby and league tournaments, games and trainings. The Arena 6 fields can be used in conjunction with the main Arena 1 playing field, providing ample space for multi-day outdoor tournaments, or community events.

Our team at Arena are experienced in hosting multi-day or week-long tournaments comprised of hundreds of teams from throughout Aotearoa. Our team can provide contact details for accommodation and transport providers for your event organisers and attendees, plus assist in organising an opening ceremony, closing ceremony, cocktail function or gala dinner.



Ngā hui taumata me ngā hui wānanga

Conferences + seminars

Arena is a venue of choice for events with a significant number of delegates. Our versatile venues can host up to 2,500 delegates for a conference and 1,500 for a gala dinner. The park-like environment boasts six Arenas, three of which are interconnecting indoor facilities.

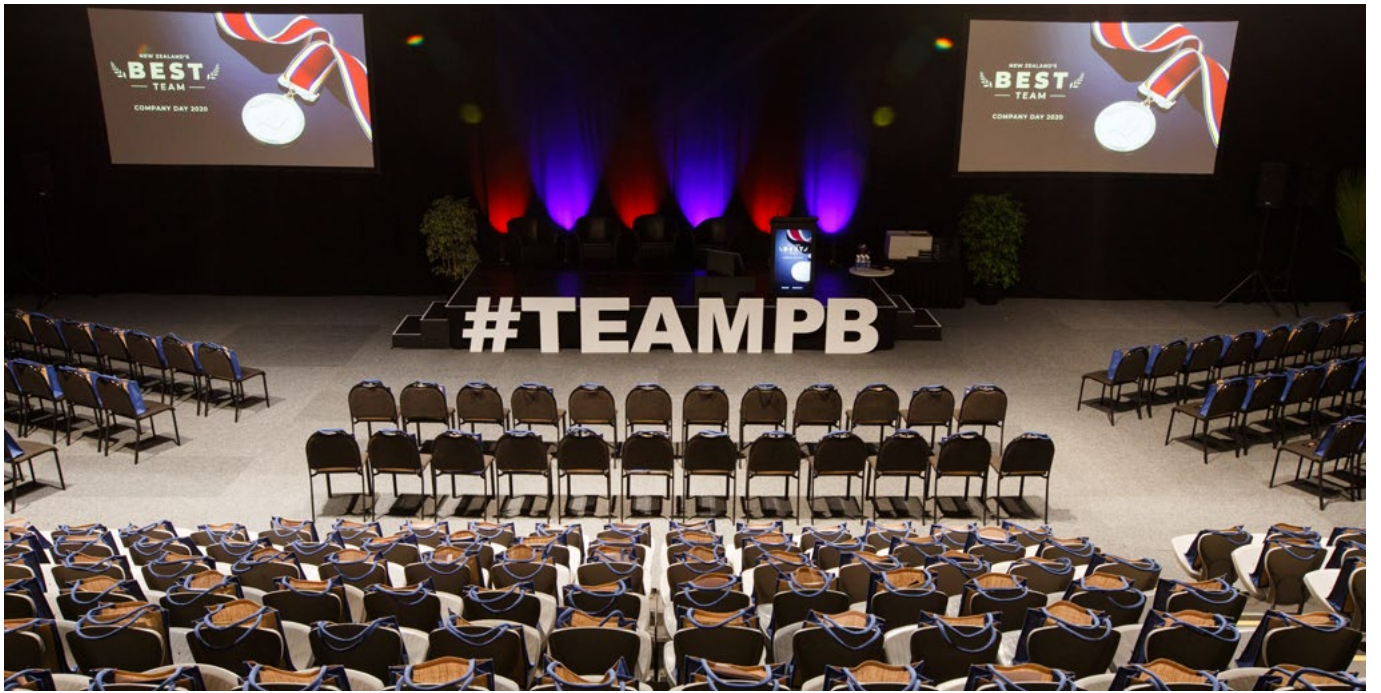
The interconnecting Fly Palmy Arena and Arena 3 can be expanded, reduced or used in combination to suit a conference or seminar of any size. The retractable seating in Fly Palmy Arena is a popular choice for theatre-style seating, with corporate lounges providing plentiful space for up to six break-out rooms.

Fly Palmy Arena also has acoustic ceiling tiles, flexible LED lighting and screens and a permanently installed 13 x 14m mothergrid truss unit with an attached lighting system, for ease of production elements and set up time. We also offer onsite carpet, draping and staging options for use across all indoor venues.

The J.A. Russell Supplies Lounge, located on Level 4 of the Arena 1 grandstand provides the most impressive venue for smaller conferences, seminars or meetings. The venue features striking 360-degree views from the Ruahine Ranges across to the central North Island mountains.

We offer the convenience of free delegate car parking, high-speed internet and room set up, all organised by your dedicated Venues + Events Coordinator.

Arena also boasts mouth-watering onsite catering, organised directly with our contract catering company, Absolute Caterers.





Ngā whakakitenga me ngā whakaaturanga ahumahi

Exhibitions + trade shows

Our venues provide plentiful space and flexible options to suit any event. With 11,900m² of quality indoor floor space, Arena provides organisers with the luxury of huge space and big opportunity.

Arena offers a range of spaces that are used for exhibitions and trade shows, including Fly Palmy Arena, Arena 3 and Arena 5.

Fly Palmy Arena is a purpose-built indoor sport and event venue making it ideal for exhibitions and trade shows with 3,400m² of floor space. Alongside plentiful space for trade booths, the venue also has break-out spaces, media rooms, organisers offices, an inbuilt ticket booth, and links directly into Arena 3. Arena 3 is a popular choice for medium-sized exhibitions or is often used in conjunction with the other indoor venues for large scale events.

Arena 5 provides flexible venue options for smaller exhibitions with 630m² of floor space in the Bell Hall and 1,050m² of floor space in Barber Hall.

With quality onsite catering, ample car parking, organiser offices, media rooms and hospitality suites, Arena is an all-in-one exhibition venue.

Our skilled facilities team will work alongside you to achieve a successful set up and pack down, in conjunction with your dedicated Venues + Events Coordinator.



Ngā hākari nui me ngā huinga kai whakapīta

Gala dinners + cocktail functions

A gala dinner is a special occasion that should be celebrated in style. At Arena we have the expertise onsite to deliver a professional and polished dinner or cocktail function. By day our venues provide professional and purpose-built meeting rooms and sporting facilities, by night the same rooms can be transformed into a themed gala dinner, cocktail party or awards ceremony.

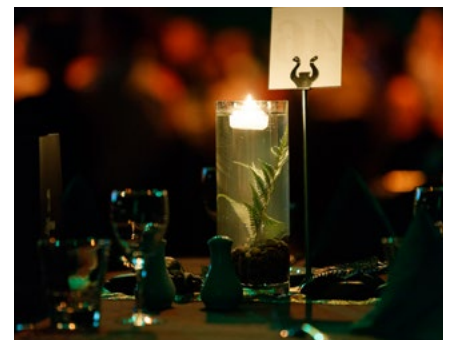
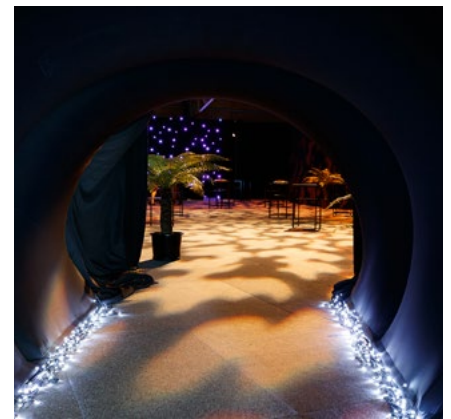
Fly Palmy Arena is a popular option for gala dinners, with the Fly Palmy Arena corporate lounges and the J.A Russell Supplies Lounge being popular cocktail or function options.

Arena has an extensive portfolio of onsite furniture and equipment from draping to carpet and staging units. Our Fly Palmy Arena offers a permanently installed a 13 x 14m mothergrid truss with side wings plus a full lighting system for ease of production elements. The team

works alongside audio visual contractors to bring your event to life through advanced lighting, theming and projection options.

Arena has an exclusive catering supplier, Absolute Caterers, who provide mouth-watering cocktail and dinner catering options delivered with quality service. Extensive menu options will exceed your expectations.







Ngā Mārena

Weddings

Planning your dream wedding has never been easier. Our all-inclusive wedding packages can turn your dream wedding into a reality.

Whether you picture a grand formal wedding reception or a small intimate gathering, let our experienced Venues + Events Coordinator create a spectacular event just for you.

We have complete wedding packages designed to give you value for money without compromise. We pride ourselves on excellent service, food and ambience.

Arena provides a walk-in, walk-out service. Our team does all the setting up so you can have a worry-free wedding. At the end of the night, you can leave without the hassle of packing and cleaning up.

Absolute Caterers have many years of combined industry experience. They know the key to a fantastic wedding is not just the food but the service as well, so whether you've planned a small, intimate celebration or a large scale wedding, the team at Absolute Caterers provide wedding catering to make your day perfect.

Whatever your unique style, taste and budget, you need a wedding catering service that truly understands the experience you want to create. Absolute Caterers' commitment to unique food that utilises the freshest local ingredients, impeccable presentation, and friendly service will have your guests talking about your wedding for years to come.

Please contact your Venues + Events Coordinator or email office@venuespn.co.nz to request our latest wedding information booklet.



Ngā Konohete

Concerts

With multiple venue options at Arena, Palmy has found its place on the tour circuit with the flexibility of indoor and outdoor spaces and the ability to host a small gig or major concert.

Our venues have seen some epic acts over the years, including UB40, Katchafire, Six60, Devilskin, Kora, Blindspott and Sol3 Mio. Our geographical location makes us perfect to host concerts, with over one-million people located within a two hour (200km) radius of Arena.

Arena 1 sets the scene for an impressive outdoor summer concert. With an abundance of seating, entry gate and corporate hospitality options, Arena 1 can put on quite the show. This venue provides promoters with huge space and big opportunity.

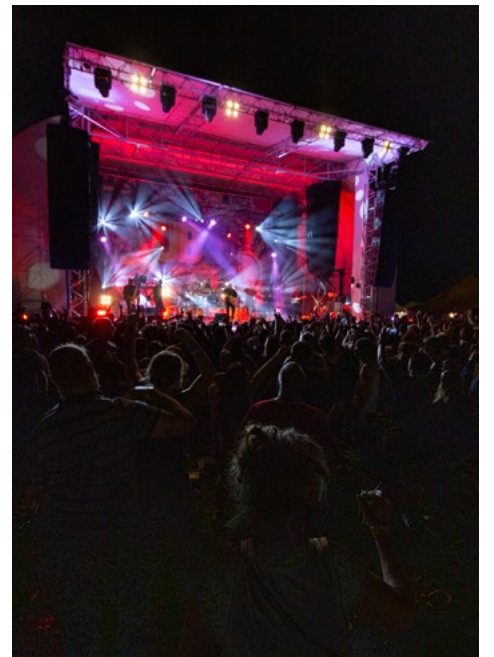
Fly Palmy Arena is a purpose-built indoor entertainment venue and a popular choice with concert promoters. This venue boasts retractable seating units, staging options, a mothergrid truss unit with lighting system, corporate lounges and a ticketing office positioned at the main entrance.

All our venues have ample room for security and bag check areas, plus the perimeter of Arena is secure.

We have an onsite ticketing coordinator who can liaise directly with our preferred ticketing provider on your behalf in the lead up to tickets going on sale through to event delivery, managing all event day ticketing requirements such as equipment, staffing and set up.

Whatever the scale of your event, you'll find our venues can put on a stellar performance.



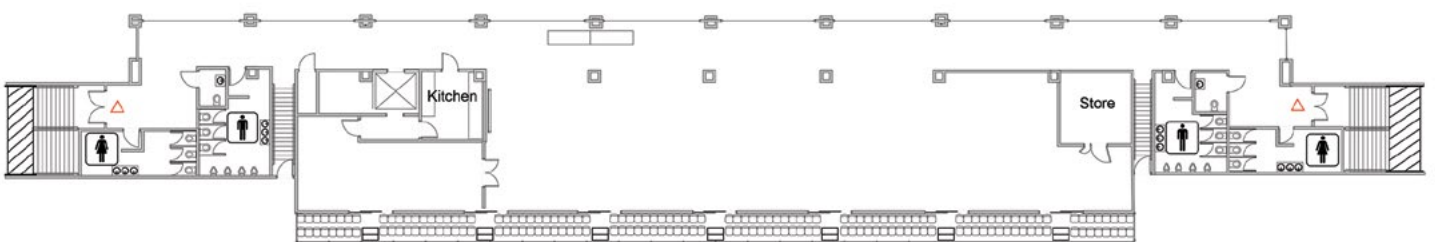


Te mahere o te whaitua

Venue map







J.A. Russell Supplies Lounge Floorplan

Arena 1

Arena 1 is the feature sports ground in the Central Districts of the North Island and is home to the Manawātū Rugby Union and Robertson Holden International Speedway.

Your attendees can view our world-class venue with redeveloped speedway pits, plaza entrance, pedestrian bridge, ablutions block, south stand and food court.

Arena 1 features a playing field and world-class speedway track. The grass oval measures 165m long and 95m wide. A large LED screen is onsite that is used for video replays, video media, streaming and advertising as required. The screen

measures 42m2. The JA Russell Supplies Lounge, Media Lounge and public food and beverage concourse level are situated in the Arena 1 Grandstand building.

Arena 1 has four access gates for patrons, which also feature ticket booths and appropriate areas for security checkpoints and ticket scanners. Like the rest of the venue, Arena 1 boasts extensive free onsite and street car parking.

J.A. Russell Supplies Lounge

The J.A. Russell Supplies Lounge is the premium viewpoint at Arena 1 and boasts 360-degree views of Palmerston North City on level 4 of the grandstand. The J.A. Russell Supplies Lounge hosts hundreds of events annually, which includes corporate functions, weddings, meetings, and cocktail functions.

This lounge can accommodate 200 people standing or 120 seated banquet style. Glass doors open outside onto 148 premium balcony seats.

FEATURES:

- Premium show field.
- Speedway track renowned for many of New Zealand's national and international speedway events.
- Seating capacity up to 18,000.
- Lighting level of 1500 lux.
- Extensive onsite and street parking.
- Media lounge with full facilities for television, radio and press representatives.
- Coaches boxes.
- Changing facilities / toilet facilities / first aid room.
- Anti-doping control station.
- Photographer and media room.
- JA Russell Supplies Lounge
- Designated food and beverage concourse
- World-class speedway pits
- Plaza entrance with pedestrian bridge

Fly Palmy Arena

Fly Palmy Arena is a purpose-built indoor sports and entertainment venue. Distinctive laminated polished timber beams are an appealing feature of the extensive 3,400m² open span interior.

Production elements include an upgraded LED scoreclock and media screens, acoustic ceiling tiles, flexible LED lighting and a permanently installed 14m x 13m mothergrid truss unit with a full lighting system.

With a seating capacity of over 3,000, Fly Palmy Arena features retractable seating units, which are versatile and allow for a range of venue layouts. A large corporate lounge overlooks Fly Palmy Arena, which can conveniently be converted into four separate corporate suites.

Fly Palmy Arena has four fully functional changing rooms that include heating, showers and toilets. An additional umpire changing room is located below the media lounges.

The Allflex Lounge overlooking Fly Palmy Arena works seamlessly as an office for event organisers and includes a private bathroom. On the concourse, there is a purpose-built merchandise shop and ticket box.

A large carpark adjacent to the venue offers extensive free car parking to attendees, with additional secure car parking located at the rear of the venue for staff and crew.

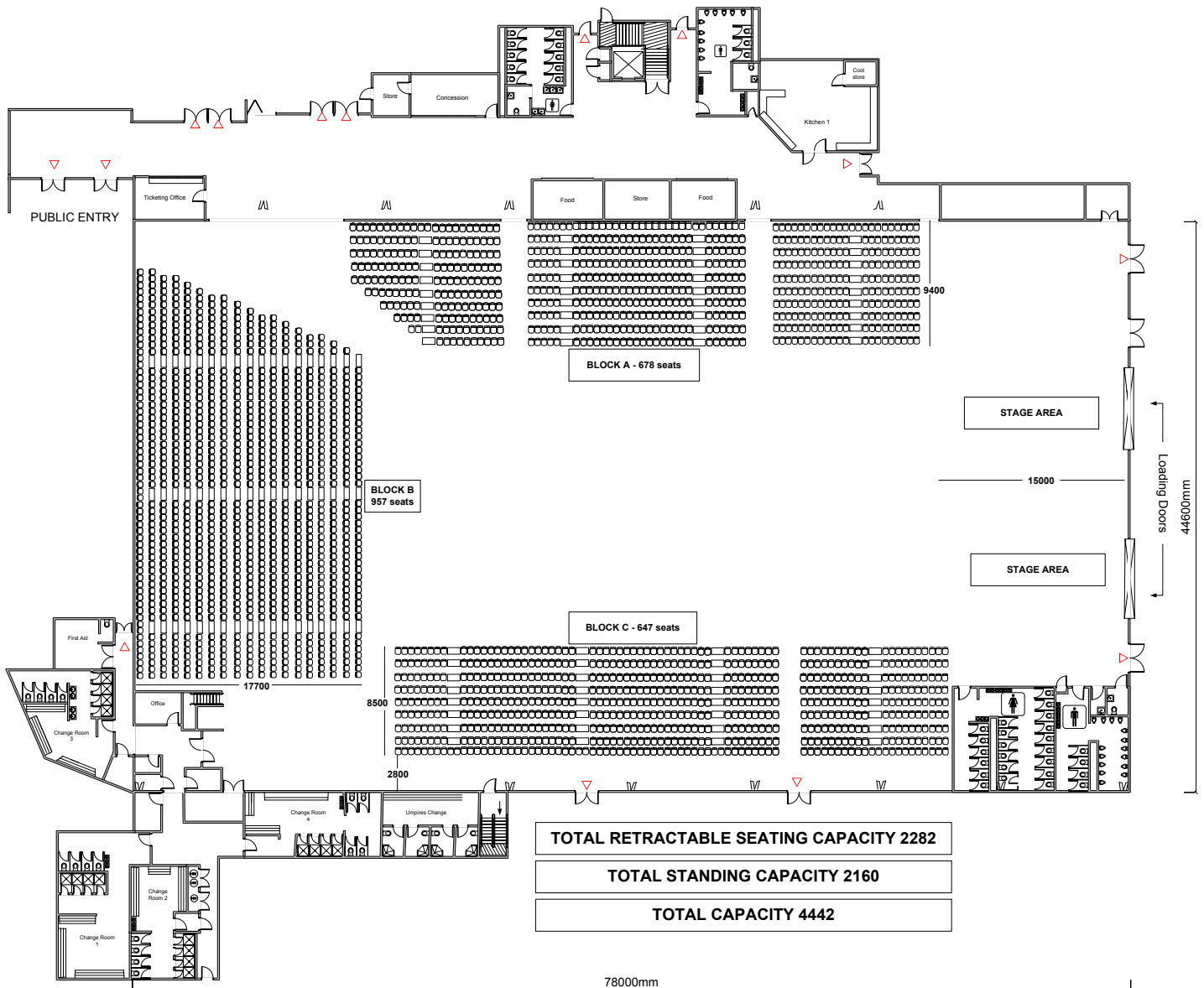
FEATURES:

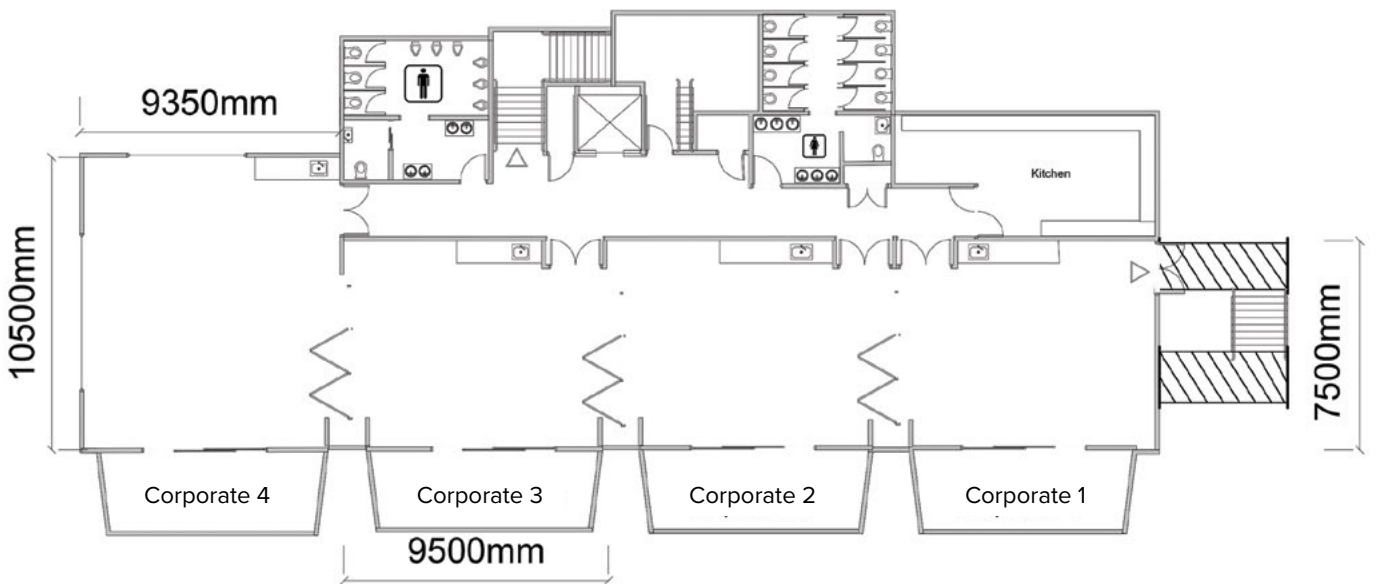
- Sports markings for either 4 basketball courts, 4 volleyball courts, 18 badminton courts, 3 netball courts or futsal courts.
- Fully sprung beech sports floor.
- 13 x 14m mothergrid truss with side wings + lighting system.
- Show courts for basketball or netball.
- Permanent truss system with standard lighting installed at the northern end of the venue, designed to reduce rigging time and minimise external hire and labour costs. Supported by 12 x 1-tonne motor hoists with load-monitoring software for safe, balanced operation. The truss measures 14m wide x 12m deep with 6m side wings and is constructed from 300mm aluminium box section.
- Four changing rooms plus an umpires changing room.
- Two 6m x 6m loading doors.
- Ticketing office.

- Comprehensive range of stage modules available onsite.
- Fully integrated sound and PA system.
- Single phase and 3 phase (32amp and 63amp) power throughout.
- Retractable seating units.
- High-speed wireless internet available on arrangement.
- Large multipurpose concourse area.
- Merchandise office.
- Media lounges.
- Direct access to Arena 3.
- Fully adjustable LED lighting to features with ability to provide television standard show-court lighting.
- Upgraded LED scoreclock and media screens

PRICE:

Please enquire today for venue rental rates. Community and school rates available.





Corporate Lounges - Arena 2

Fly Palmy Arena

Corporate Lounges

Fly Palmy Arena has four intimate corporate lounges overlooking the venue that can be used either individually or in conjunction holding a capacity of 40 per lounge or up to 160 across all four suites.

Fly Palmy Arena

Media Lounges

Fly Palmy Arena has two Media Lounges overlooking the venue.

These two lounges are positioned perfectly for all events held inside the venue whether it be for an national sports tournament or a school volleyball tournament.

MEDIA LOUNGES INCLUDE:

- TV platform with open viewing.
- Bi-fold windows overlooking main arena.
- Ladder for communications cabling.
- Significant outdoor space for truck parking.
- 3 phase power (32amp and 63amp).
- Kitchenette and toilet facilities.
- Full data connections.
- Air conditioning.
- Viewing window through to Arena 3.
- Internal and external access.

CORPORATE LOUNGES INCLUDE:

- Balcony overlooking the main arena.
- Kitchenette area.
- Air conditioning units.
- Sound system.
- Toilet facilities

PRICE:

Please enquire today for venue rental rates. Community and school rates available.

Arena 3

With a floor area of 2,100m² this popular indoor stadium is a great choice for medium-sized exhibitions, functions, sporting events, dinners and conference plenaries.

Arena 3 has internal access directly through to Fly Palmy Arena and the B&M Centre.

Situated centrally between our indoor stadiums, Arena 3 has internal access directly through to Fly Palmy Arena and the B&M Centre, making it an ideal supporting venue to provide additional floor space for a variety of event set-ups. With Arena 3's sport markings, permanent dividing net

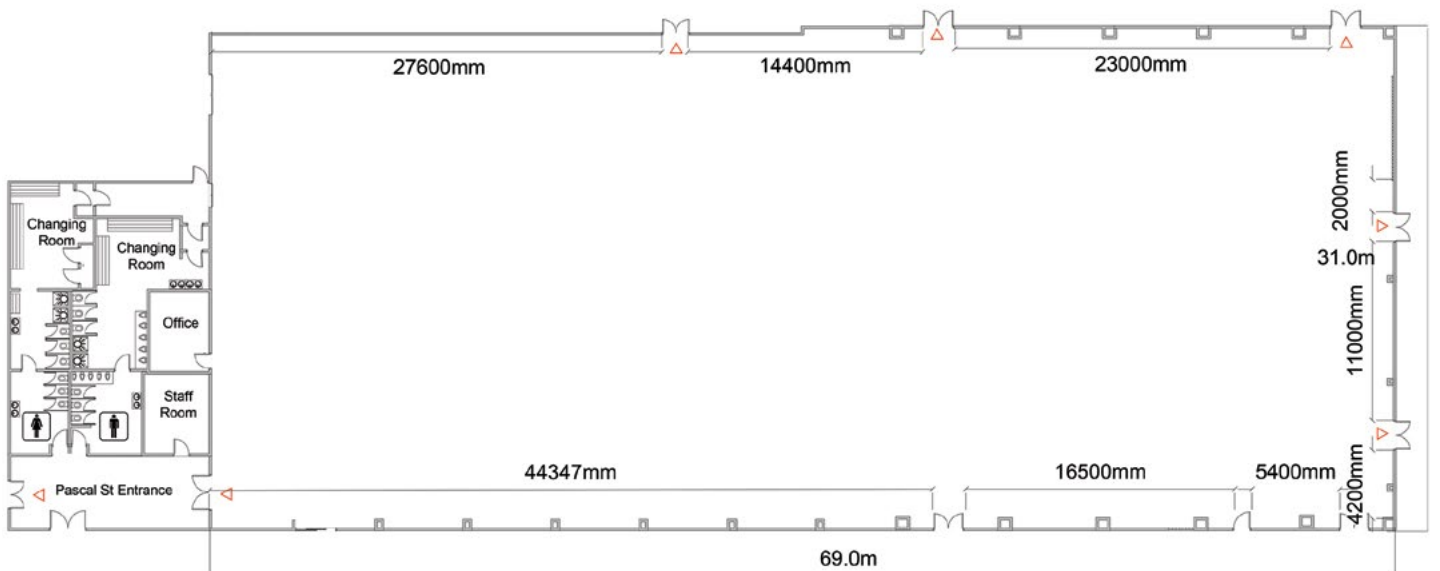
and the ability to set up portable seating, this is a great venue choice for smaller sporting fixtures, or, the venue can be transformed into a modern exhibition or cocktail function space using our portfolio of onsite carpet and draping for corporate events. There are two fully functional changing rooms with showers, heating and toilets and a designated kitchenette area.

FEATURES:

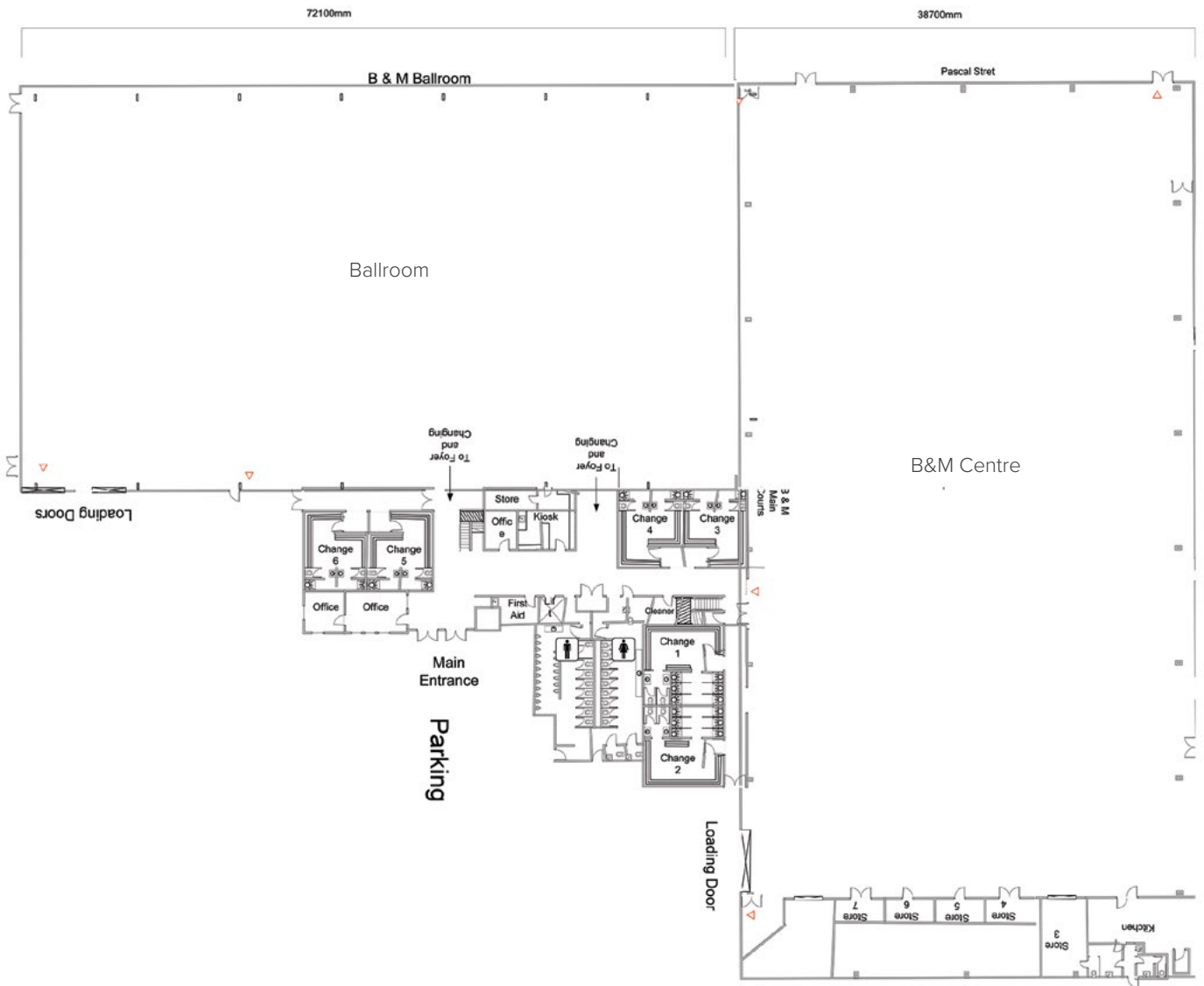
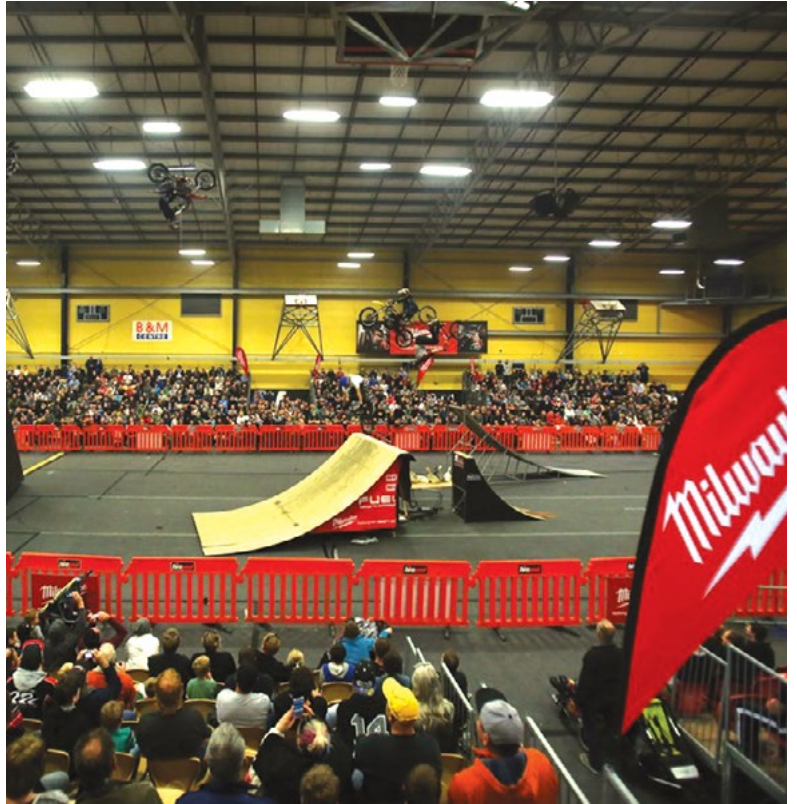
- Sports markings for either 2 basketball courts, 4 volleyball courts, 8 badminton courts, 2 netball courts, 1 senior futsal court, roller derby or skating circles for competitions.
- Quality timber floor.
- Connecting covered access to Fly Palmy Arena and B&M Centre.
- Two adjoining changing rooms and toilet facilities.
- Sound system and PA.
- 5.5m x 5m door loading capacity.
- Heating system.
- Portable seating and furniture for all event needs.
- Event organiser's office available by arrangement.
- Single and 3 phase power outlets throughout.

PRICE:

Please enquire today for venue rental rates. Community and school rates available.



Arena 3



B&M Centre - Arena 4

B&M Centre

(Arena 4)

This purpose-built indoor community sports centre is the equivalent of 60 houses under one roof!

The B&M Centre is one of New Zealand's most extensive indoor sports facilities with a total floor area of 6,400m².

Arena 4 is comprised of the B&M Centre and Ballroom, which can be used together or divided into two separate spaces.

Arena 4 offers direct access to six fully functional changing rooms with showers, heating and toilets.

This is a multi-purpose venue with the ability to accommodate a wide range of sporting events or tournaments using our portable courtside seating or can be transformed into a suitable corporate event venue using our portfolio of onsite carpet and draping.

FEATURES:

- Sports markings in the B&M Centre for either 4 basketball courts, 6 volleyball courts, 4 netball courts, 16 badminton courts or 3 tennis courts.
- Sports markings in the Ballroom for either 3 basketball courts, 3 netball courts, 5 volleyball courts or 9 badminton courts.
- Fully sprung beech sports floor.
- Quality sports equipment and court fittings for primary codes.
- Electronic score boards.
- Score benches.
- 6 changing rooms.
- Medical first aid room.
- Quality PA and sound system.
- Event organisers office.
- Kitchenette facilities.
- Portable courtside seating.
- Food kiosk.

PRICE:

Please enquire today for venue rental rates. Community and school rates available.



Arena 5

Located on the Waldegrave Street frontage, Arena 5 includes Bell Hall (630m²), the Barber Hall (1050m²), Waldegrave Lounge (405m²).

These popular interconnecting facilities are an ideal choice for community events or for a range of community sports such as skating, table tennis, indoor bowls and marching.

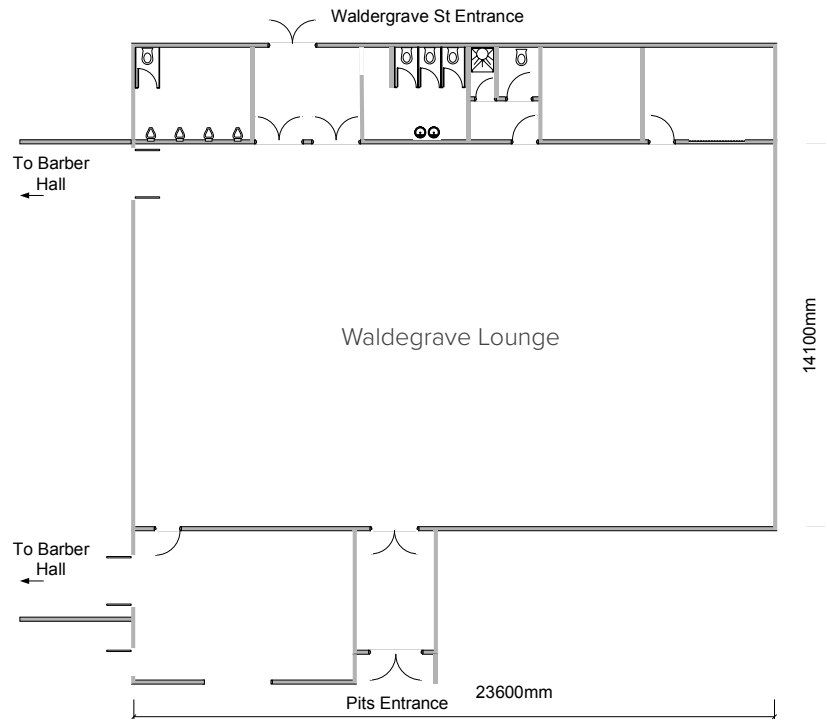
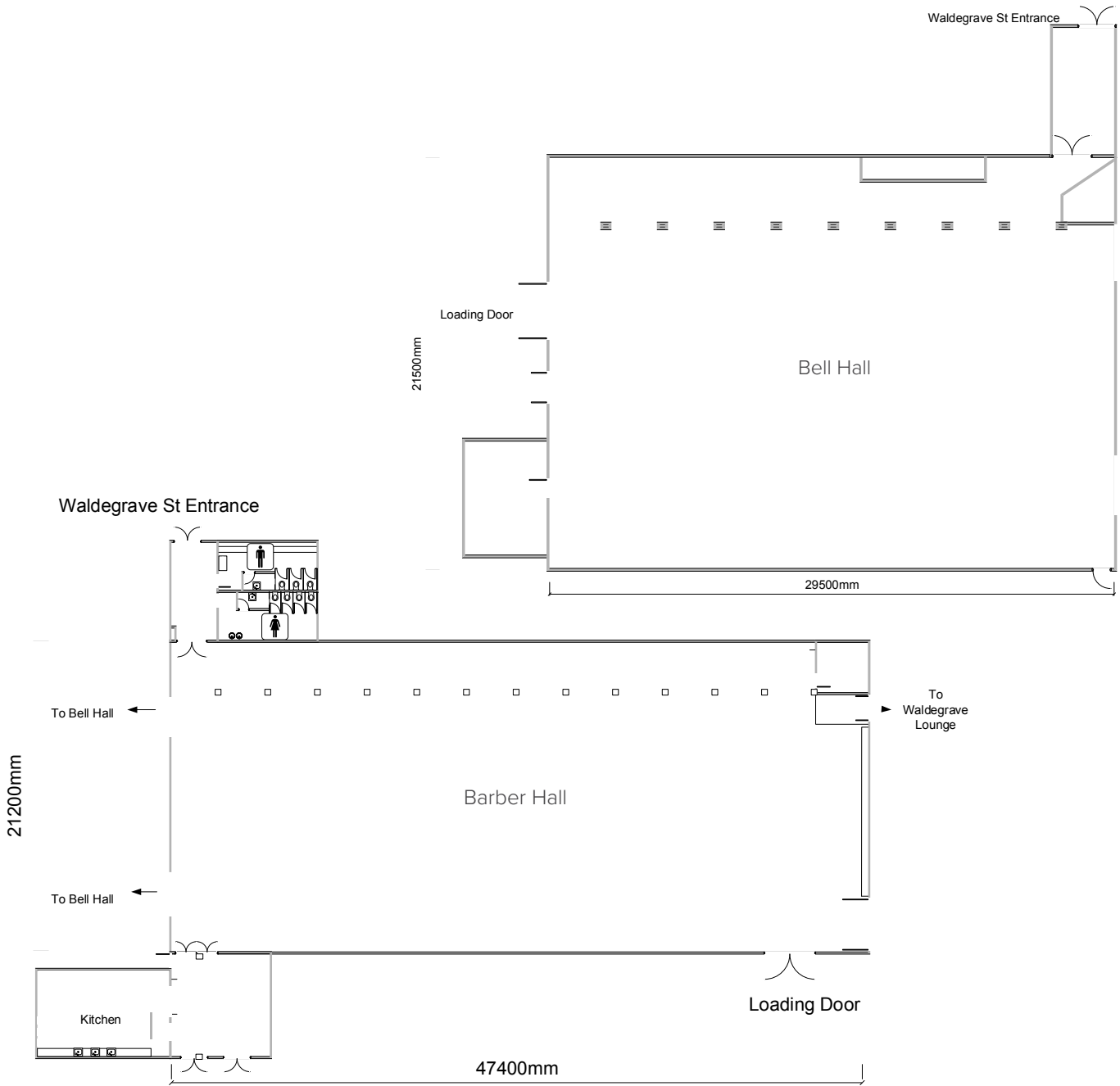
With direct access to Arena 1, these venues are ideal for providing additional supporting space for a variety of set-ups.

FEATURES:

- The Bell Hall features sports markings for roller derby and skating circles.
- Kitchen facilities.
- Full toilet amenities.
- Sound system.
- 175 onsite car parks.
- Direct access to Arena 1.
- Inter-connecting access between the venues

PRICE:

Please enquire today for venue rental rates. Community and school rates available.





Arena 6

Arena 6 is also known as the back fields and is made up of three highly regarded training and playing fields that complement Arena 1's main oval. One of the three fields is an all-weather artificial turf with permanent markings for rugby and football. The artificial turf was completed in 2019 and is regarded as a world-class playing field.

During the summer months, the back fields are mainly used by summer football.

The Arena 6 Artificial Turf is certified by World Rugby standards and is the first of its kind in the region. The backfields are in regular use for summer and winter club sport. In winter, the grounds are used by rugby, rugby league and football for both training and as match day playing fields.

The Arena six playing fields can be hired in conjunction with the Arena one oval to host entertainment or activities.

They can be hired in conjunction with the main Arena to host outdoor entertainment or activities.

At the southern end of the back fields, there is additional field space which provides an additional area for warm-ups or trainings. Direct access to 4 changing room spaces are accessible from the back fields, as well as being in close proximity to Arena 1 and B&M Centre facilities.

FEATURES:

- Highly regarded artificial turf with markings for rugby and football.
- All season use.
- Artificial turf offer both training and match day playing fields.
- Changing room facilities.

PRICE:

Please enquire today for venue rental rates. Community and school rates available.



Kōwhiringa kai

Catering

Mouth-watering delicacies for all occasions; from meetings to multi-day conferences, from luncheons to large gala dinners – Absolute Caterers design the perfect menu to complement your event. Experience the culinary expertise, the creative flair and the dedication to excellence that is the hallmark of Absolute Caterers; your event catering specialists. The team design their

menus to ensure you are always impressed: simply describe your occasion, and the team will provide event catering that will exceed your expectations.

Your dedicate venue + event coordinator can provide you with a copy of our catering menu pack.



Whare noho

Accommodation

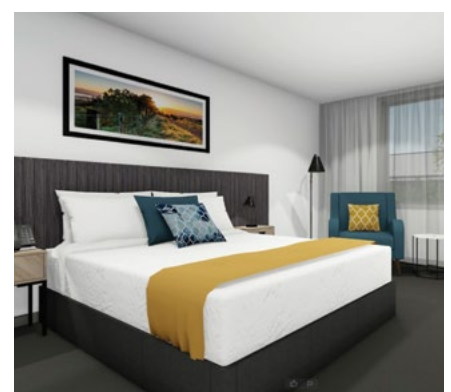
Hotels	Star	Rooms	Capacity
Copthorne Hotel Palmerston North	4	107	182
Distinction Coachman Hotel	4	78	217
Distinction Palmerston North Hotel	4	85	200
Quest Palmerston North	4	41	96
Quality Suites Central Square	4	37	85
		348	779

Motor Lodges/Inns	Star	Rooms	Capacity
Arena Lodge	4	16	74
Bentleys Motor Inn	4	22	55
BKs Motor Lodge	4	43	70
Camelot Motor Lodge	4	20	44
Chancellor Motor Lodge	4	18	38
City Corporate Motor Inn	4	12	28
Cornwall Motor Lodge	4	28	90
Drovers Motor Inn	4	27	50
Fitzherbert Regency Motor Lodge	4	20	60
Hacienda Motor Lodge	4	25	75
Harringtons Motor Lodge	4	12	40
		243	624

Motels	Star	Rooms	Capacity
Aubyn Court Spa Motel	4	30	90
Avenue Motel	4	13	50
Bella Vista Motel	4	18	61
Big Five Motel	4	14	46
Pavilion Motel	4	16	34
Rose City Motel	4	26	77
Shadzz Motel	4	25	47
		142	405
Total 4-star accommodation		733	1,808

Additional Motels

There are an additional 18 motels in Palmy with a 3 or 3.5-star accommodation rating. These are comprised of 373 individual rooms that can accommodate another 1,001 guests.





Rēhia ki Papaioea

Things to do in Palmy

Palmy's dining scene

With over 200 bars, restaurants, bakeries and cafés, there really is something for everyone. If you crave farm to plate, Palmy is sure to be your jam. Here you'll find an abundance of foodie delights all within just a few kilometres. From fine dining and gourmet indulgence to traditional dishes from around the world, you'll never be far from a meal that suits your taste and budget. You'll find yourself spoiled for choice by the city's diverse range of international fare.



Alchemy & I

Alchemy & I salon and spa offers everything from innovative hair experiences to invigorating beauty treatments, complete with cocktails made in their fully-licensed bar. They have everything you need to look and feel glamorous. Whether you're after some 'me time' or want to share the experience with friends, indulge yourself!



Explore our pathways

Whether you're looking for a short stroll close to Palmy city, or you're keen to stretch your legs further out in the region, we have plenty of must do walks. Take a wander through ancient native bush, groves of kahikatea and tōtara, riverside beauty, high-altitude tussock country, or through magnificent gorges – Manawātū's trails are full of surprises. So strap on your boots, pack some snacks and get set for an adventure.



Boutique shopping

From clothing to art and books to jewellery, you'll find off the-beaten-path shopping spots dotted throughout Palmy and Manawātū. With plenty of handmade products and unique bespoke pieces to discover around the region, shop our independent boutiques, pick up all the major brands or be a little boujie and buy artisan fare directly from farmers' market stalls.

Makoura Lodge

Jump in a ute with one of Makoura's experienced drivers while they take you over their hair-raising 4x4 track. Tackle nature's elements and discover why Toyota New Zealand uses Makoura's offroad track to test their new Hiluxes.



Arrosta Coffee Roasting Co. Tour + Cupping session

Walk through Arrosta's award-winning roastery and see the inner workings of what goes into crafting the perfect brew. Then put your taste buds to the test with a cupping session. Try a selection of Arrosta's finest coffee blends, each with a distinct flavour profile and see how many flavours you can taste.



Cocktail making and canapés at The Fat Farmer

Get a group together for a hands-on cocktail-making experience at The Fat Farmer. Learn how to shake, stir and strain three of their signature cocktails with the guidance of an expert mixologist while enjoying a selection of canapés throughout the session.



The Herb Farm Skincare Classes

The Herb Farm, a family-owned and operated business that creates 100% natural skincare and health products. Unwind while enjoying delicious fresh food and creating your own healing cream using herbal extracts made from herbs grown in the gardens of The Herb Farm.

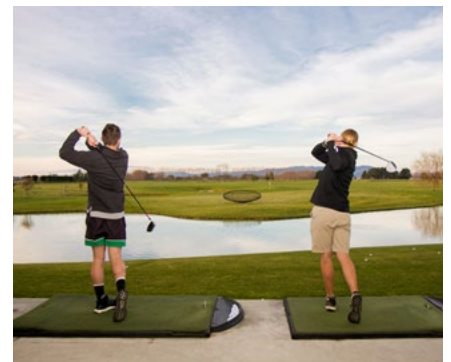
Beer and gin tasting at Brew Union

Soak in the atmosphere while sampling some of the finest craft beers the city has to offer. There are 21 beverages available on tap ranging from the crisp and easy-drinking Golden Ale, to IPAs and the Palmy famous Swamp Juice, a hazy IPA. It's not all about the impressive liquid delights; the food on the Brew Union menu is delicious too. Woodfire pizzas are a hit, with the dough left to rest for two days with sumptuous flavour combinations.



Orlando Country

Orlando Country Café + Bar, the perfect escape located just a short drive from Palmy's city centre. Enjoy indoor and outdoor dining overlooking the rural setting and extensive landscaping. While you're there, book a bay and hit some golf balls from Orlando's sheltered driving.



Arapuke Forest Park Trails

Ride until your heart's content through a network of over 30kms of epic mountain bike trails at Arapuke park. The lower North Island's premier mountain bike park is home to a growing network of tracks and trails, from Grade 2 to Grade 6.

E rongō i ngā tāwara reka o konei

Taste your way around

With over 200 bars, restaurants, bakeries and cafés there really is something for everyone. If you crave farm-to-plate, our region is sure to be your jam. Here you'll find an abundance of foodie delights all within just a few kilometres. From fine dining and gourmet indulgence to traditional dishes from around the world, you'll never be far from a meal that suits your taste and budget. You'll find yourself spoilt for choice by the region's diverse range of international fare.

Nero Restaurant

Nero Restaurant offers refined dining in a charming historic villa, showcasing seasonal New Zealand produce with beautifully crafted dishes. Known for exceptional service and an elegant atmosphere, it's a favourite for celebrations, date nights, and memorable meals in the heart of Palmerston North.

Tony's Pizza

Tony's Pizza pairs classic, no-frills pizza with a fun, social vibe, featuring arcade games and table games that make it a popular hang-out spot. With generous slices, loaded toppings, and entertainment to match, it's ideal for group catch-ups, casual dinners, and relaxed nights out.

Saigon Corner

At this healthy and modern eatery, you'll taste the freshest herbs and ingredients to give you the most authentic flavours of Vietnam.

Little Savanna

Little Savanna was created from a passion for great food and a wonderful dining experience, where the finest of New Zealand's produce is cooked the South African way – flame grilled.

Kaitahi

- Chef Table & Lodge

Set amongst the rolling hills on the edge of Palmerston North, Kaitahi Chef's Table & Lodge offers an intimate food journey inspired by the flavours, people, and produce of the Manawatū. With thoughtfully curated seasonal menus and a strong connection to local ingredients, Kaitahi creates a uniquely Palmy dining experience where every course tells a story of the region and its vibrant food culture.

Haru Japanese Restaurant

A calming and contemporary dining spot in the heart of Palmerston North, Haru Japanese Restaurant delivers beautifully presented Japanese cuisine full of fresh flavours and authentic touches. From delicate sashimi and handcrafted sushi to warming shared platters and signature cocktails, Haru offers a refined yet welcoming experience perfect for relaxed dinners, celebrations, and nights out with friends.

Brew Union Brewing Co

Brew Union Brewing Co has a selection of house beers that are freshly brewed onsite. Their pizzas are hand stretched and cooked to perfection in a wood fired oven.

The Fat Farmer

The Fat Farmer delivers distinctive, modern cuisine, bite upon bite. An abundance of locally sourced produce has been intricately woven into their menu by world class chefs, providing a variety of mouth-watering temptations for even the most refined palate.

Teacher Teacher - Cocktail Bar

Teacher Teacher is Palmerston North's rooftop cocktail bar and nightlife spot, serving inventive drinks, DJs and upbeat vibes above The Cobb. It's a stylish social hub for evening drinks and gatherings, with signature cocktails and a lively atmosphere that makes it a favourite for weekend nights out.



Little Savanna



Tony's Pizza



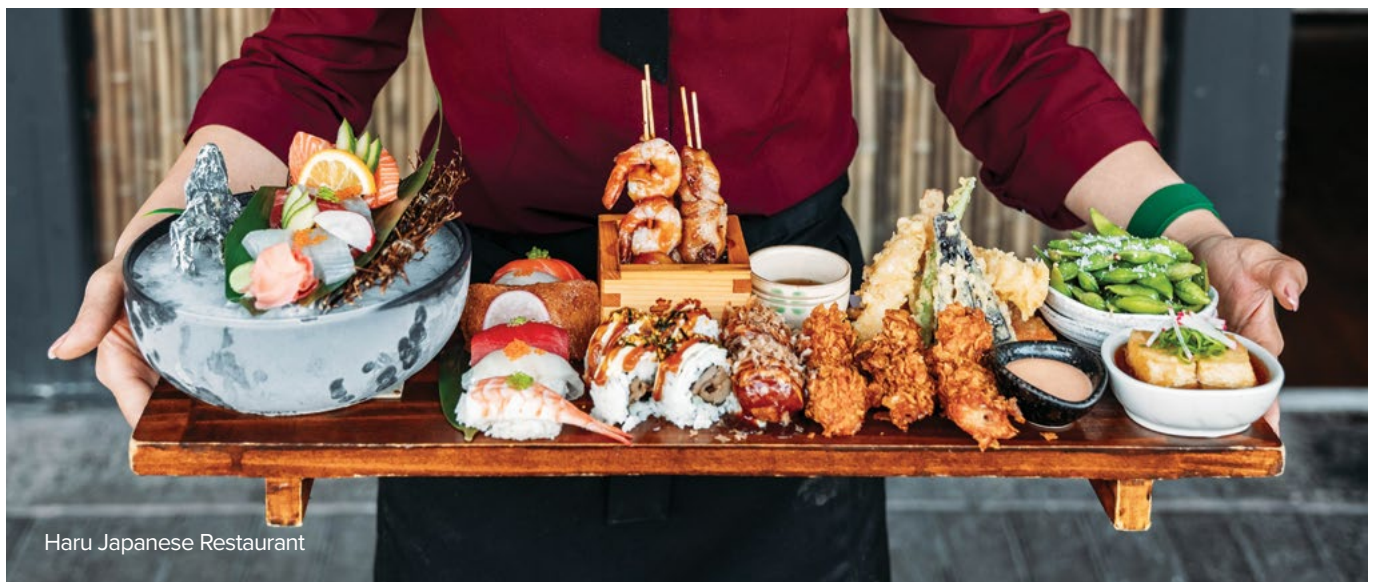
The Fat Farmer



Brew Union

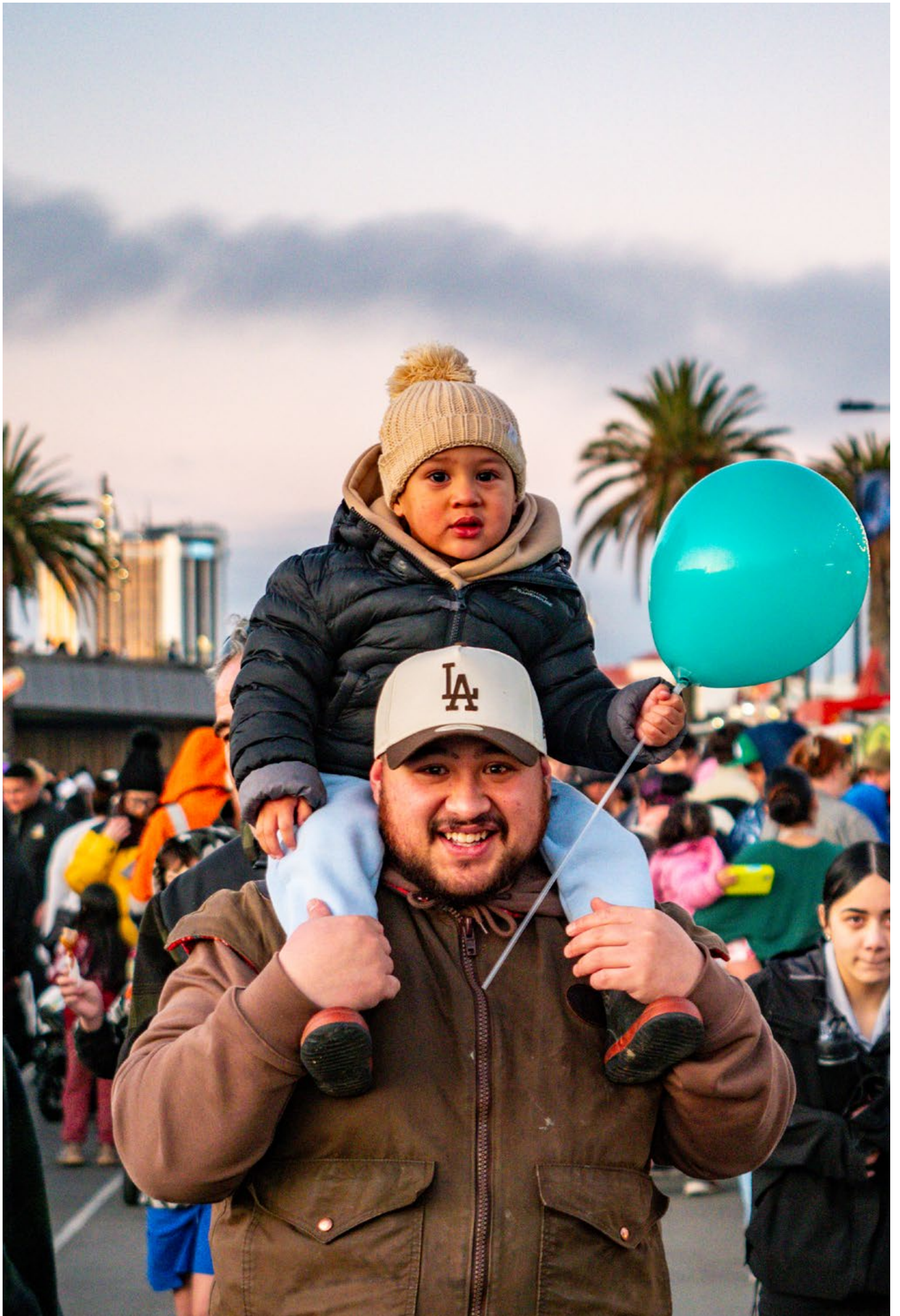


Nero Restaurant



Haru Japanese Restaurant







PALMY[®]
VENUES +
EVENTS

venuespn.co.nz / office@venuespn.co.nz / 0800 383 688